



**TERTIARY AND VOCATIONAL EDUCATION COMMISSION
COMMON WRITTEN EXAMINATION**



All rights reserved

NVQ Level 05 - Semester I		
Quantity Surveying		
Measurement - I	F45C002M02	Three Hours
* Answer All Questions		

Instructions:

You are required to taking off quantities for the following items as detailed in attached drawings. All measurement shall strictly comply with Standard Methods of Measurement of Building works (First revision) Sri Lanka Standard 573:1999.

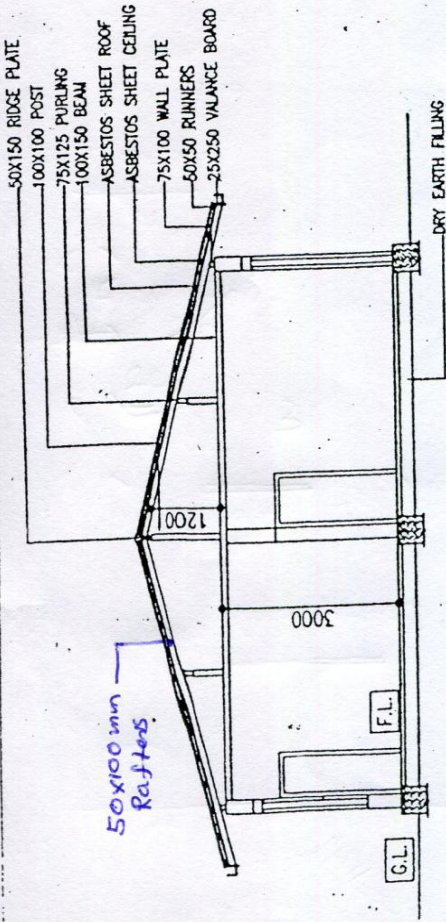
If you require additional information prepare a query sheet with your questions and make appropriate assumptions as answer to the questions. Use taking off Sheet for taking off quantities.

Specifications

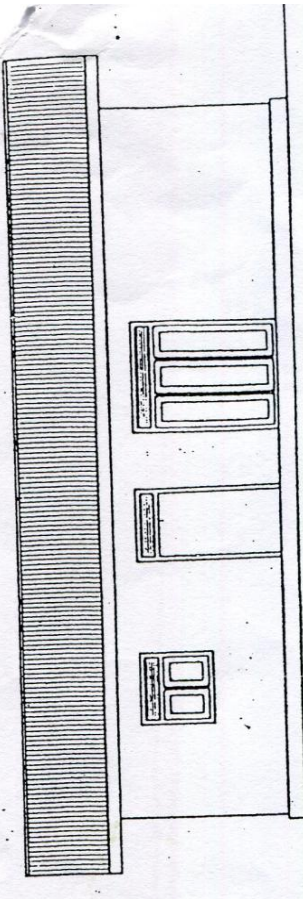
- a. Screed 1:3:6 (25mm) mass Concrete.
- b. Strip foundation 1:2:4 (20 mm) mass Concrete.
- c. Walls: - Common bricks with 1:5 cement sand mortar.
- d. Foundation: - Random rubble with 1:5 cement sand mortar.
- e. D.P.C.: - 20 mm tk. 1:3 cement sand mortar and finished with applying two courts of hot tar.
- f. Type of soil :- Sandy Soil
- g. Water table 1.2 m from ground level.

Answer All Questions

- | | | |
|---|-------------------|--------------------|
| 1. Taking off quantities up to Damp Proof Course Level | (Marks 55) | } Using Drg. No 01 |
| 2. Taking off quantities for roof work | (Marks 30) | |
| 3. Calculate the centreline girth using Drg. No 02 | (Marks 15) | |



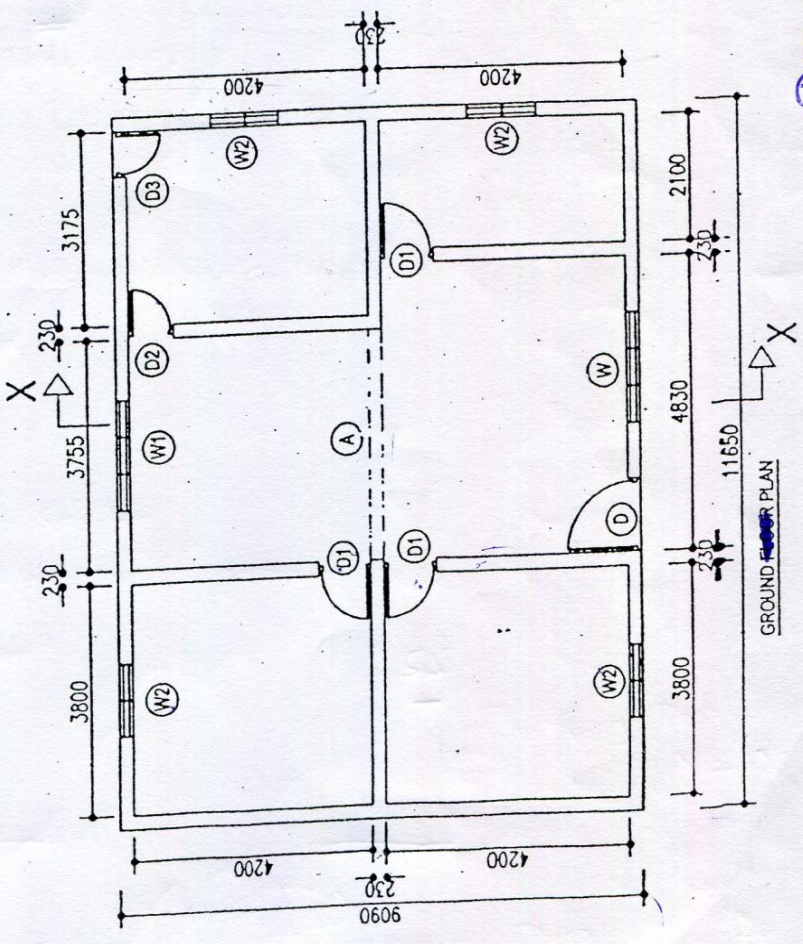
FRONT ELEVATION



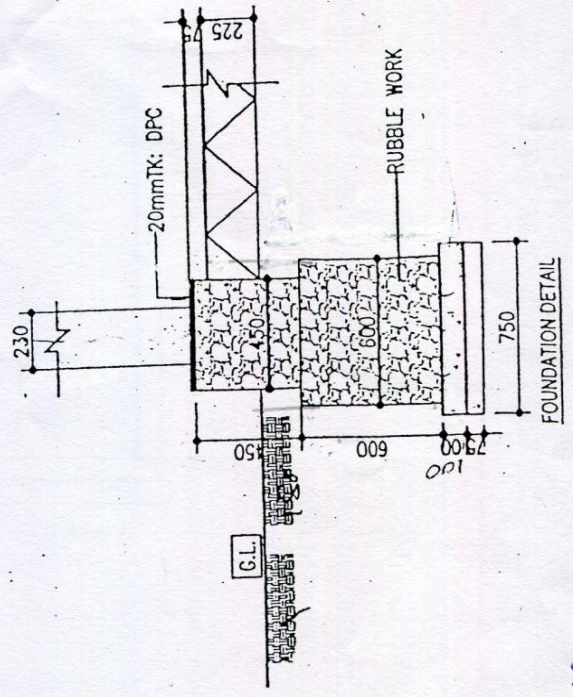
SCHEDULE OF DOORS AND WINDOWS

NO.	TYPE	DESCRIPTION	WIDTH	HEIGHT	SIZE
01	D	TIMBER DOOR	1200	2000	1200 X 2000
02	D1	TIMBER DOOR	800	2100	800 X 2100
03	D2	TIMBER DOOR	750	2100	750 X 2100
04	D3	TIMBER DOOR	750	2000	750 X 2000
05	W	GLAZED WINDOW	1800	1800	1800 X 1800
06	W1	GLAZED WINDOW	1200	1800	1200 X 1800
07	W2	GLAZED WINDOW	1200	1800	1200 X 1800
08	A	ARCH	8750	2800	8750 X 2800

SECTION X-X



GROUND PLAN



FOUNDATION DETAIL

Drawing No 01

Schedule of doors and windows				
No	Type	Description	Size	
			Width	Height
01	D	Timber Door	1200 x 2800	
02	D1	Timber Door	900 x 2100	
03	D2	Timber Door	750 x 2100	
04	D3	Timber Door	750 x 2800	
05	W	Glazed Window	1800 x 1800	
06	W1	Glazed Window	1200 x 1800	
07	W2	Glazed Window	1200 x 1800	
08	A	ARCH	3756 x 2800	

